

**CSR in Global Supply Chain**  
**Johanna Lemmetty**

EMAN-EU Conference 2007  
EMA & Sustainable Supply Chains  
24-25 May 2007 - Espoo, Finland

For internal use  
2 © Nokia Siemens Networks

Presentation / Author / Date



## Content

Setting the scene, global supply chain

Supply chain management

- Our approach
- Scope of CSR
- Toolbox
- Monitoring and measuring
- Process from CSR point of view

In-Depth Supplier Assessments

Summary

## Setting the scene

Direct purchases with hundreds of suppliers, located globally

Providing:

- Materials (electronics, electromechanics, subassemblies, mechanics)
- Contract manufacturing services
- Software
- OEM hardware
- ODM
- Logistics services
- R&D Collaboration
- Implementation and maintenance services

Indirect purchases:

Indirect purchasing has thousands of suppliers globally  
(catering, travelling, cleaning, office supplies, laptops, etc)

## Our approach in supply chain management

CSR is an integral part of our purchasing processes and practices

### Nokia Siemens Networks Supplier Requirements

- Previous Nokia or Siemens requirements valid
- Roll out of NSN-SR during first year of operations
- NSN-SR in line with Nokia Supplier Requirements

### Purchasing processes/sub-processes

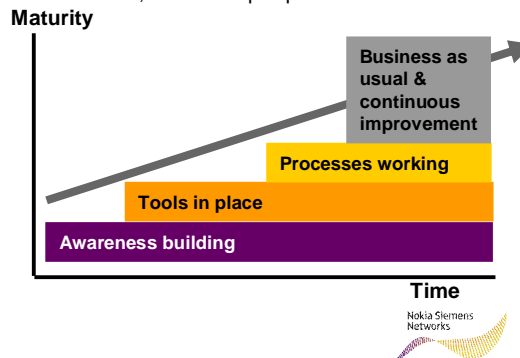
- Supplier selection & Contracting, supplier assessments, relationship & performance management

### Competence building

- Internal training, supplier training

### Communication & Collaboration

- Corporate responsibility reports & external www-sites
- Supplier Days
- Industry collaboration: GeSi – Supply Chain Work Group



## Scope of CSR in supply chain

Environmental  
Operational  
Performance

Social  
Operational  
Performance

Product  
Compliance to  
Legal and Nokia  
Siemens Networks  
Requirements

## Toolbox in use



For internal use  
7

© Nokia Siemens Networks

Presentation / Author / Date



## Monitoring and measuring

**Monitoring is done as a part of normal business practices – examples:**

### **Contracts**

Contracts include environmental and ethical clauses

### **On-site assessments**

System assessments conducted regularly  
Trained lead auditors, requirements based on NSN-SR

### **Indepth labour conditions assessments**

A regularly used option  
Lead auditors have SA8000 auditor training; requirements based on NSN-SR and application of SA8000 criteria

### **Supplier self-assessments**

Questionnaire survey

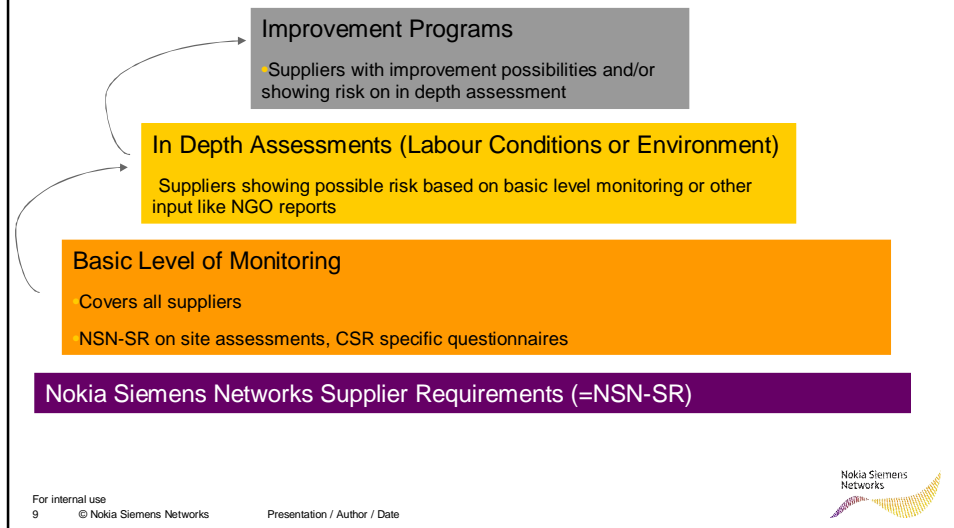
For internal use  
8

© Nokia Siemens Networks

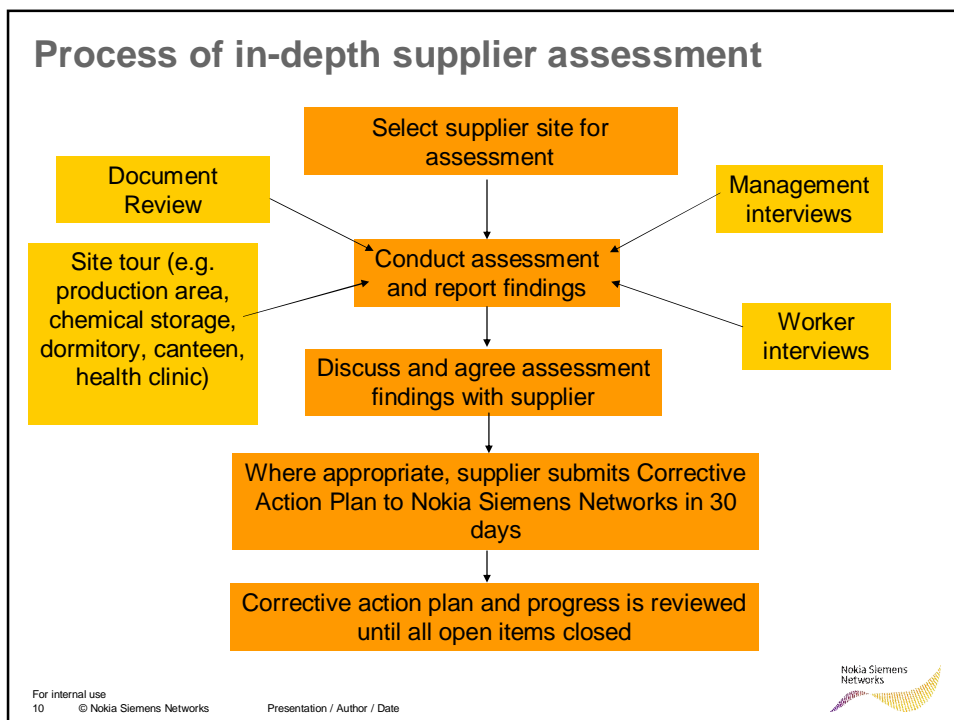
Presentation / Author / Date



## Relations of different type of assessments



## Process of in-depth supplier assessment



## Summary: Key Messages

Environmental and ethical issues are integrated into normal business processes of purchasing

Encouraging and requiring our suppliers to take full responsibility for their operations and supply chain – The sustainable approach

Commitment to continuous improvement keeping in mind the dynamic and complex nature of sourcing activities

**Thank you!**

**Questions?**