

Environmental Efficiency Indicators

— Case Construction Industry

Isto Nuorkivi
Environmental Manager
Skanska Oy

Tuula Pohjola
Professor
HUT

Skanska in brief



Escambia bridge
USA



Swedbank arena
Sweden



Schools
Storbritannien



Palace of Justice
Czech Republic

- One of the world's leading companies in construction and project development
- Operations in selected "home markets"
- Four Business streams
- 4,000 repeat customers
- 56,000 employees
- EUR 13 Billion in revenue

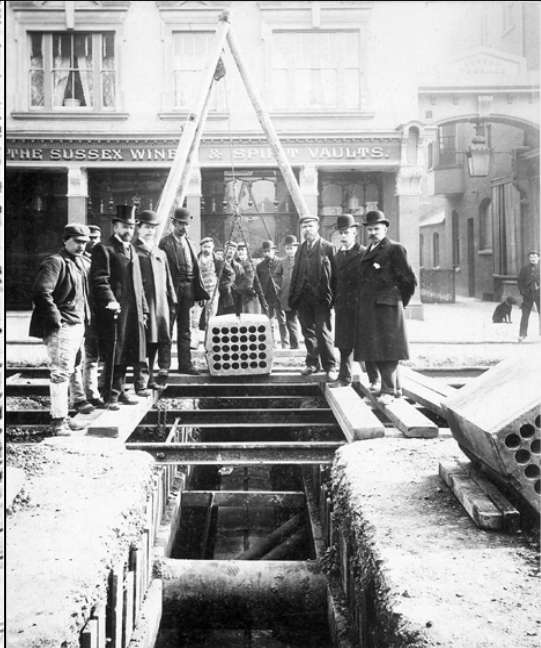
Long tradition



1871
Skånska Cement AB



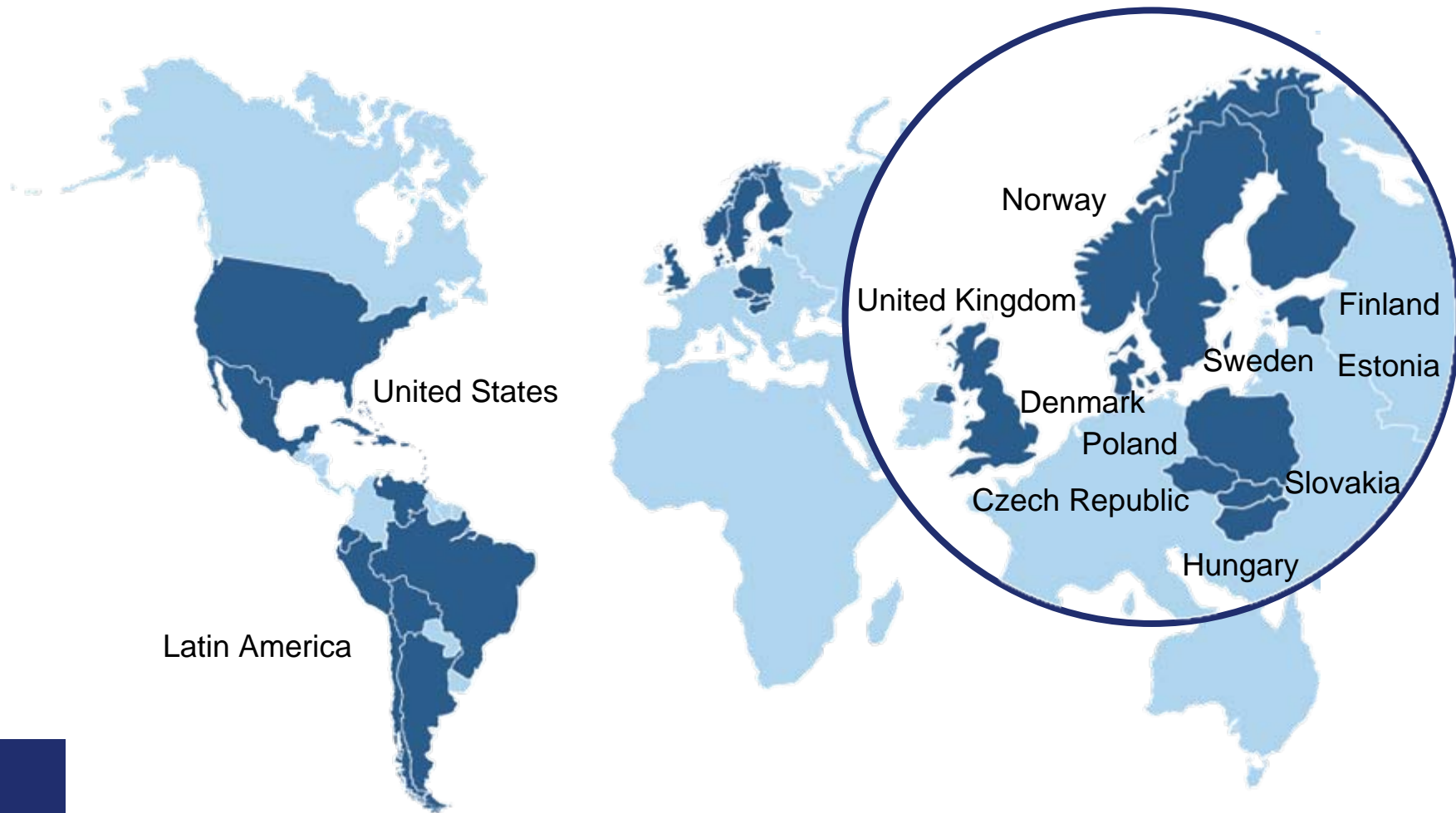
1887
AB Skånska
Cementgjuteriet
founded by R.F.Berg



1897
The first
international order
(Leeds)



Skanska's home markets

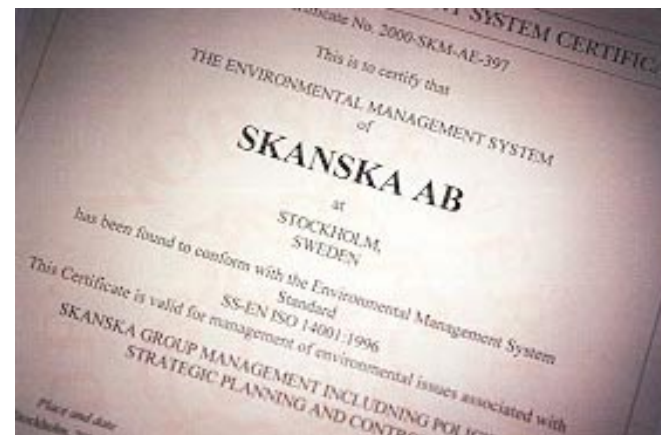


Primary assets



Environmental performance

- All units are ISO 14001 certified
- All new units ISO 14001 certified within two years after acquisition
- Example of focus areas: hazardous materials, energy efficiency, waste, local pollution at construction sites
- Skanska does not engage in activities with unacceptable environmental risks



Environmental Performance Indicators – the traditional view

- Absolute
- Relative
- Indexed

Absolute

- Physical inputs and outputs
- E.g. tons of CO₂ emitted, tons of waste produced





Relative

- Physical inputs or outputs / key figure
- E.g. Tons of CO2 emitted / product

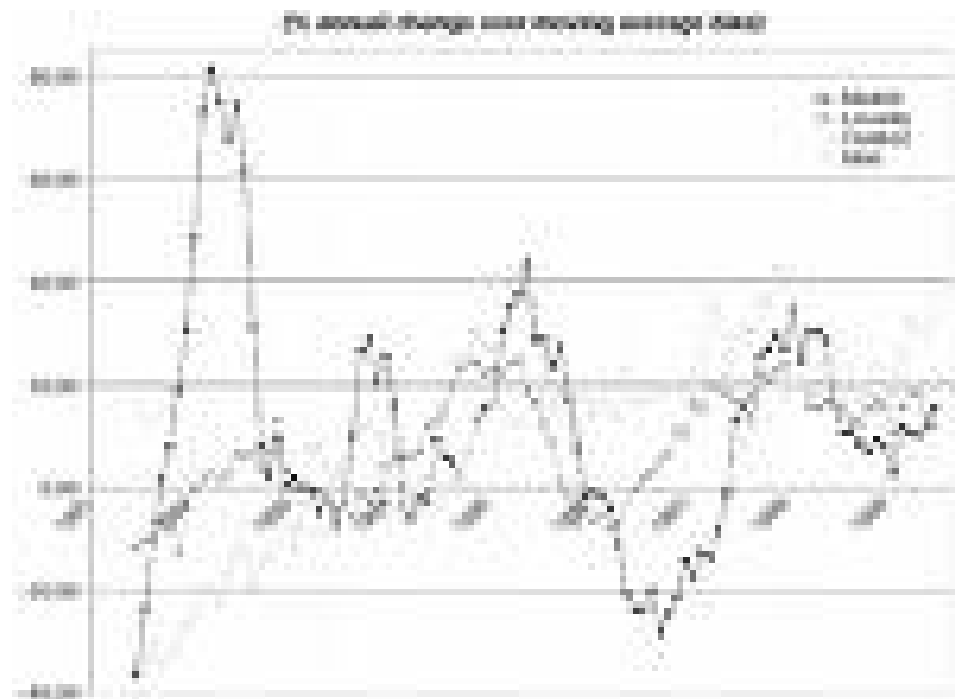




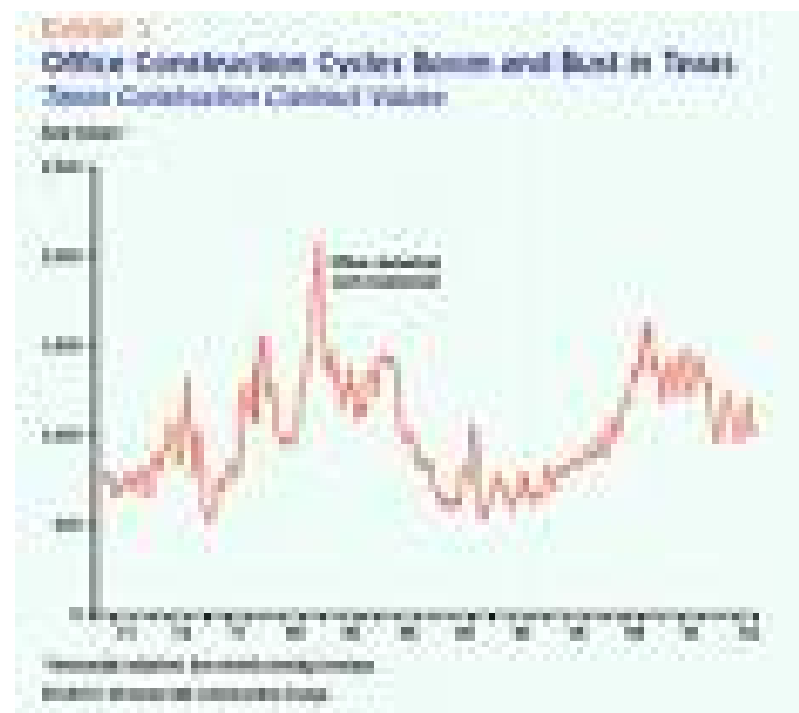
Indexed

- Physical inputs or outputs / baseline
- E.g. % of CO2 emitted compared to the reference year





Source: Forward Group



Efficiency indicator

An optimal value of an input or an output

The actual value of that input or output

E.g. material efficiency (number of bricks needed for a building / number of bricks actually consumed)

Benefits

- Comparability between different products
- Comparability between different sizes
- Comparability between different years
- Adaptability to different operations and industries

SKANSKA

Thinking Ahead